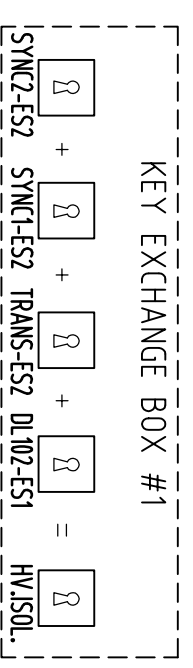
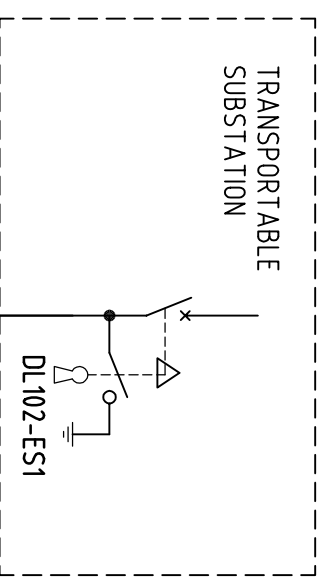


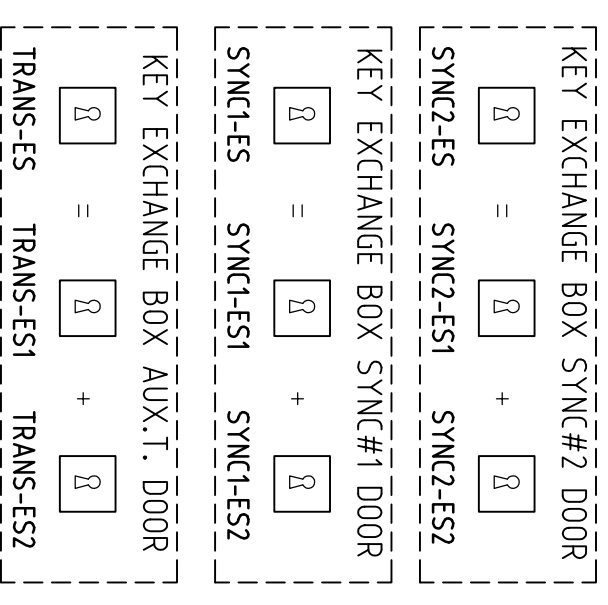
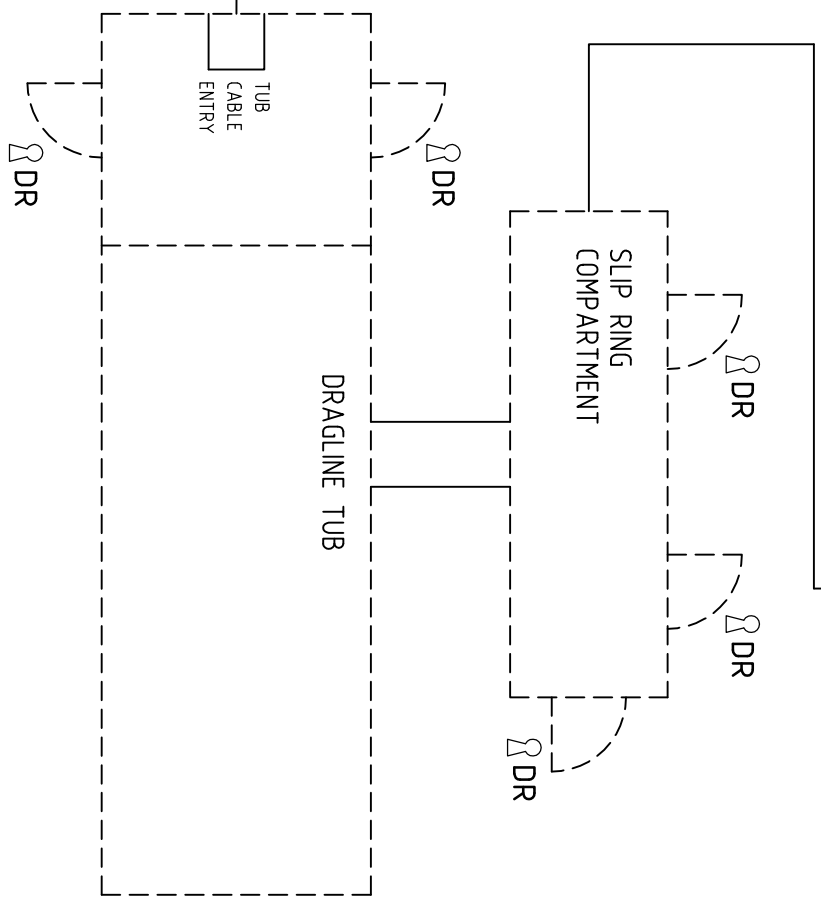
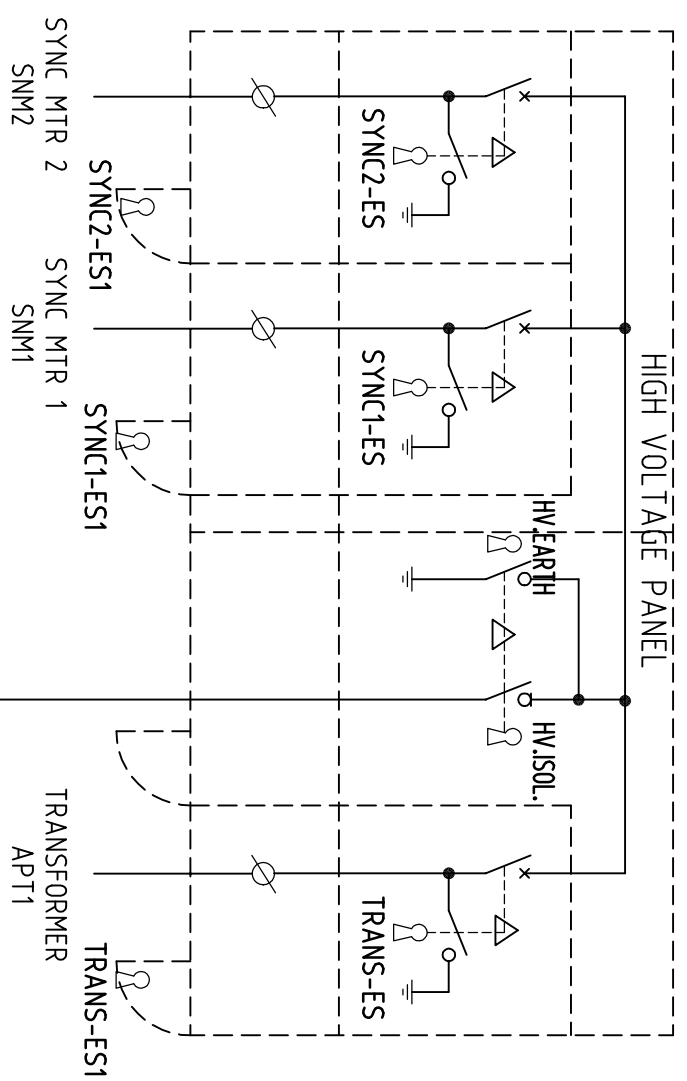
DOOR KEY EXCHANGE BOXES, FEEDER CIRCUIT BREAKERS



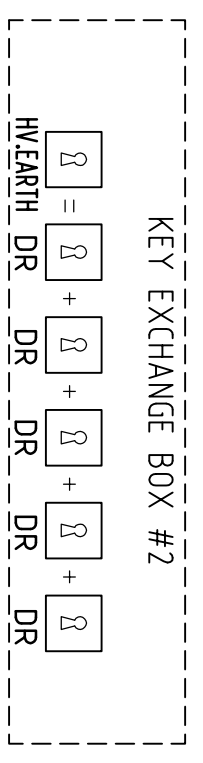
TO ACCESS 'HV-ISOL.' KEY:
SUBSTATION BREAKER IS ISOLATED AND EARTHED
TO RELEASE 'DL102-ES1' KEY
ALL FEEDER CIRCUIT BREAKERS IN HV PANEL ARE
ISOLATED AND EARTHED TO RELEASE 'SYNC2-ES2',
'SYNC1-ES2', 'TRANS-ES2' KEYS



TO ACCESS 'DL102-ES1' KEY:
REQUEST MG SETS TO BE STOPPED ON DRAGLINE
ISOLATE DRAGLINE CIRCUIT BREAKER IN SUBSTATION
EARTH OUTGOING CABLE TO RELEASE 'DL102-ES1' KEY



TO ACCESS KEYS '-ES1 AND '-ES2', IN THE THREE EXCHANGE BOXES ABOVE:
FEEDER CIRCUIT BREAKER IS IN ISOLATED POSITION AND
EARTH SWITCH APPLIED TO RELEASE '-ES' KEY
THIS '-ES' KEY CAN THEN BE INSERTED IN ITS APPROPRIATE
EXCHANGE BOX TO RELEASE THE TWO TRAPPED KEYS
THESE KEYS '-ES1' TO OPEN THE ASSOCIATED CABLE ACCESS DOOR
AND '-ES2' TO GO TO KEY EXCHANGE BOX NO1 TO GIVE
ACCESS TO KEY 'HV-ISOL.'



TO ACCESS HIGH VOLTAGE COMPARTMENTS ON DRAGLINE:
KEY 'HV-EARTH' NEEDS TO BE INSERTED TO ALLOW THE FIVE
'DR' KEYS FOR ACCESS TO THE VARIOUS COVERS

ISSUED FOR REVIEW

DRAWING NUMBER		REV		BY		CKD		DATE		DESCRIPTION	
A		A		DAH		PAK		22/01/09		REVIEW ISSUE	
B		B		BLO.		JC.		30/04/09		COMPLETE DRAGLINE SYSTEM DRAWN.	
C		C		C		C		C		C	
D		D		D		D		D		D	
E		E		E		E		E		E	
F		F		F		F		F		F	
G		G		G		G		G		G	
H		H		H		H		H		H	
I		I		I		I		I		I	
J		J		J		J		J		J	
K		K		K		K		K		K	
L		L		L		L		L		L	
M		M		M		M		M		M	
N		N		N		N		N		N	
O		O		O		O		O		O	
P		P		P		P		P		P	
Q		Q		Q		Q		Q		Q	
R		R		R		R		R		R	
S		S		S		S		S		S	
T		T		T		T		T		T	
U		U		U		U		U		U	
V		V		V		V		V		V	
W		W		W		W		W		W	
X		X		X		X		X		X	
Y		Y		Y		Y		Y		Y	
Z		Z		Z		Z		Z		Z	

DESIGNED	N/A	DRAWN	D.HARRISON
CHECKED	P.KELLY	DATE	22/01/09
APPROVED	N.T.S.	SCALE	

GENERAL ELECTRIC INTERNATIONAL INC. MOTORS, AUSTRALIA		This drawing is Copyright & remains the property of GE Company. It must not be shown or copied without first obtaining written permission from General Electric.	
ANGLO COAL, GERMAN CREEK, DL102 POWER DISTRIBUTION, ISOLATION KEY SEQUENCE DIAGRAM		JOB NUMBER AGERET08-011	REVISION B
SHEET SIZE A3	CONTINUED ON 3A	SHEET NO. 2B	